

# DISTRICT EIGHT

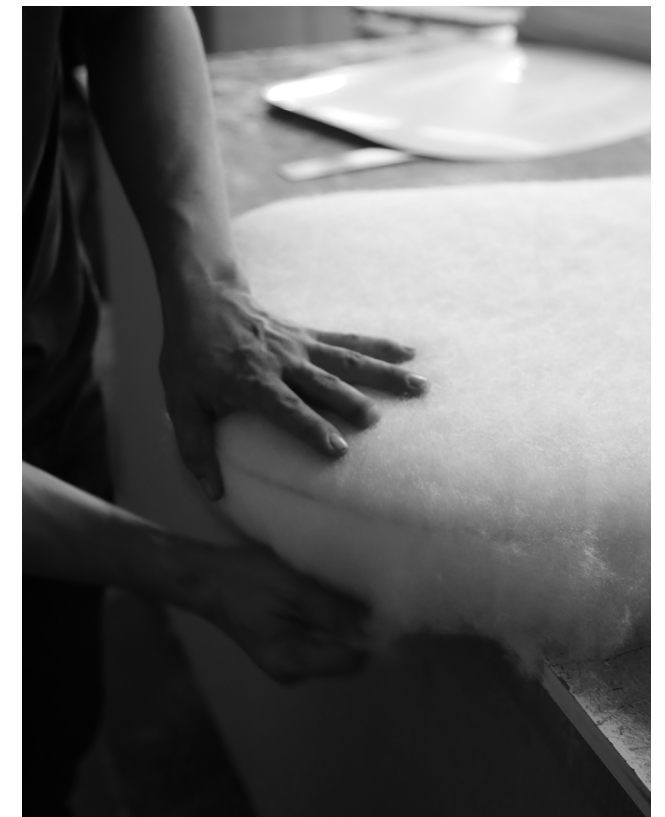
# MATERIAL INDEX

2026



At District Eight, material integrity lies at the core of our design philosophy. Every collection begins with a careful consideration of the materials that shape it - their origin, structure, and the way they interact with light, touch, & time.

From responsibly sourced timber and natural stone to Italian leather, curated textiles, hand-worked metals, and traditional lacquer finishes, each element is selected for both performance and expression. These materials are chosen not only for their visual character, but also for their durability, structural reliability, and the tactile qualities that define everyday experience with furniture. Through meticulous craftsmanship and controlled finishing techniques, raw materials are refined while preserving their natural identity. Grains, textures, and subtle variations are allowed to remain visible, revealing the authenticity of the material rather than concealing it. The result is a palette of surfaces that work in quiet harmony. Materials that age gracefully and contribute to furniture designed to endure both physically and aesthetically.



District Eight's fabrics are carefully curated to provide versatile upholstery solutions across collections. From smooth woven surfaces to expressive high-texture textiles, the palette focuses on neutral tones for ease of use, complemented by selected accent colors to support diverse design needs.

Our leathers are sourced from leading Italian tanneries and selected for their balance of quality, durability, and tactile appeal. The range includes finishes from matte to smooth, and textures from flat to mid-grain, offering flexible options across applications.

**UPHOLSTERY**

/

**FABRIC**

/

**LEATHER**

- Frere
- Elgon
- Fler
- Echo
- Gema
- Arda
- Tara
- Noah
- Neos
- Mohair

- Sora
- Omari
- Amos



UPHOLSTERY COLLECTION FINISHES VIABLE

TIMBER: RAW OAK BEIGE OAK SEARED OAK EBONIZED OAK



	GRADE A	GRADE E	GRADE F		GRADE G		GRADE H	GRADE I	GRADE K	L1	L2	L3	
	FRERE	ELGON	FLER	ECHO	ARDA	GEMA	TARA	NOAH	NEOS	MOHAIR	SORA	OMARI	AMOS
AMES													
BAGUA													
BOW													
BUOM													
COLLETTE													
HIDA													
JOSS													
KNOT													
LODGE													
LOLA													
NEN													
NÔM													
STILT													
VELD													
VICUNA													

**UPHOLSTERIES**

**/ GRADE A**

**/ FRERE**

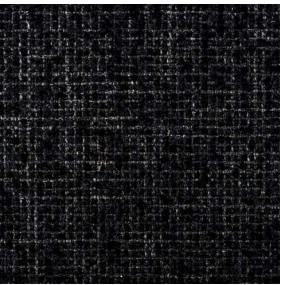
Frere combines a structural grid pattern with a soft boucle texture, giving surfaces visual depth and a gentle tactile appeal. Its refined texture enhances seating comfort while adding a subtle architectural quality to upholstered pieces.



Frere Ivory  
- 1229



Frere Grey  
- 1230



Frere Flint  
- 1231

**COMPOSITION**

30% Acrylic,  
8% Linen,  
62% Polyester

With a flat woven pattern and smooth hand feel, Elgon offers a clean, understated surface that suits minimalist and refined interiors. Its even texture provides visual calm and pairs well with both sofa and chair frames



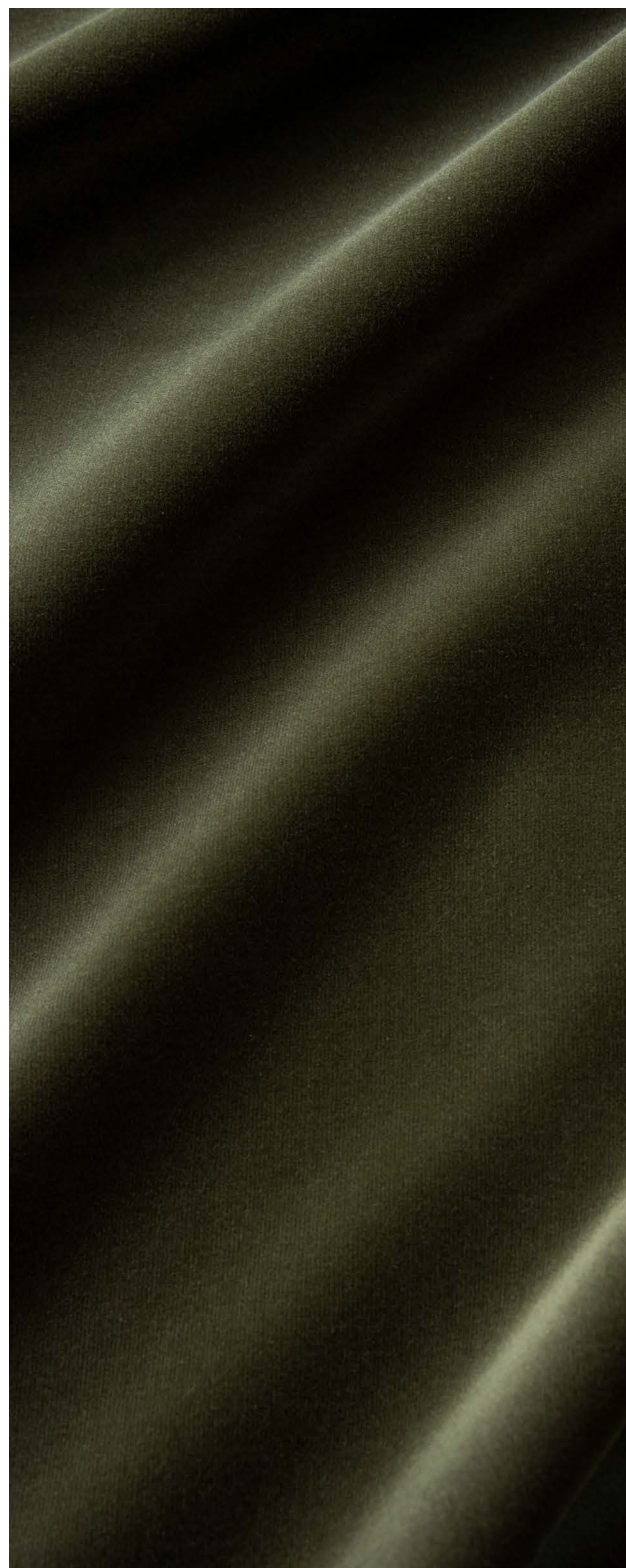
Elgon Ivory  
- 1235



Elgon Wheat  
- 1236

**COMPOSITION**

7% Acrylic,  
7% Linen,  
84% Polyester,  
2% Wool



Fler is a cotton velvet with a rich, matte appearance and a soft, luxurious touch. It brings a warm, tactile quality to upholstery without shine, creating a sense of casual elegance and comfort in both seating and lounging settings.

**COMPOSITION**

90% Cotton,  
10% Polyester



Fler Pearl  
- 1144



Fler Camel  
- 1154



Fler Brick  
- 1149



Fler Forest  
- 1147



Fler Bark  
- 1150



Echo features a gently loopy surface that balances softness with volume. Its textured character adds depth without being visually busy, ideal for designs that benefit from both comfort and a nuanced visual expression.

**COMPOSITION**

45% Coton,  
46% PolyCotton,  
9% Polyester

**DURABILITY**

50.000 Martindale



Echo Ivory  
- 1181



Echo Thunder  
- 1182



Echo Flint  
- 1183



Arda is a plush Belgian chenille with a bumped texture that adds extra tactile comfort. Its combination of softness and subtle shine creates an inviting surface that feels generous under touch.



Arda Pearl  
- 1023



Arda Thunder  
- 1037

**COMPOSITION**

44% Acrylic,  
8% Cotton,  
11% Linen,  
16% Polyester,  
21% Viscose

A Belgian chenille textile with a smooth hand feel, Gema offers a slight sheen that reflects light softly without overpowering. Its refined texture enhances both contemporary and transitional furniture styles.



Gema Pearl

- 1027

---

41% Acrylic,  
17% Cotton,  
21% Polypropylene,  
21% Polyester



Gema Thunder

- 1036

---

35% Acrylic,  
14% Cotton,  
11% Linen,  
17% Polyester,  
2% Viscose



With a tight woven appearance and defined pattern, Tara delivers structure and subtle rhythm without heaviness. Its surface commands attention while remaining respectful of the overall form.

**COMPOSITION**

34% Acrylic,  
14% Cotton,  
18% Polypropylene,  
34% Polyester



Tara Ivory  
- 1085



Tara Quartz  
- 1052



Noah offers a high-textured character with pronounced boucle "balls," creating a lively surface that highlights shape and detail. Its expressive weave adds personality while celebrating material tactility.

**DURABILITY**

20.000 Martindale  
(Noah Wheat)



Noah Ivory  
- 1162

28% Cotton,  
2% Polyamide,  
44% PolyCotton,  
10% Polyester,  
1% Silk imitation,  
15% Wool



Noah Wheat  
- 1184

28% Cotton,  
2% Polyamide,  
42% PolyCotton,  
12% Polyester,  
16% Wool



Noah Bark  
- 1161

28% Cotton,  
2% Polyamide,  
44% PolyCotton,  
10% Polyester,  
1% Silk imitation,  
15% Wool



Reminiscent of Italian linen, Neos features an exceptionally smooth hand feel and subtle elegance. Its refined surface brings quiet sophistication to upholstered pieces without overt visual impact.



Neos Pearl  
- 1159



Neos Bark  
- 1158

**COMPOSITION**

41% Coton,  
9% Linen,  
6% Polyamide,  
44% Viscose

**DURABILITY**

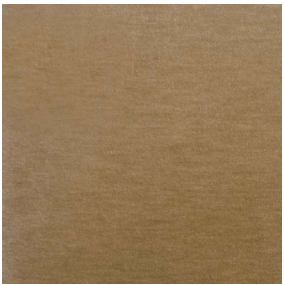
100.000 Martindale



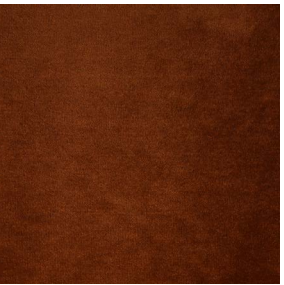
Top-tier mohair is sourced from Angora goats, delivering a fine, lustrous fiber prized for its natural sheen and resilience. When blended with viscose, it produces a fabric with soft luminosity and tactile richness — a premium choice for refined upholstery.



Mohair Sand  
- 1092



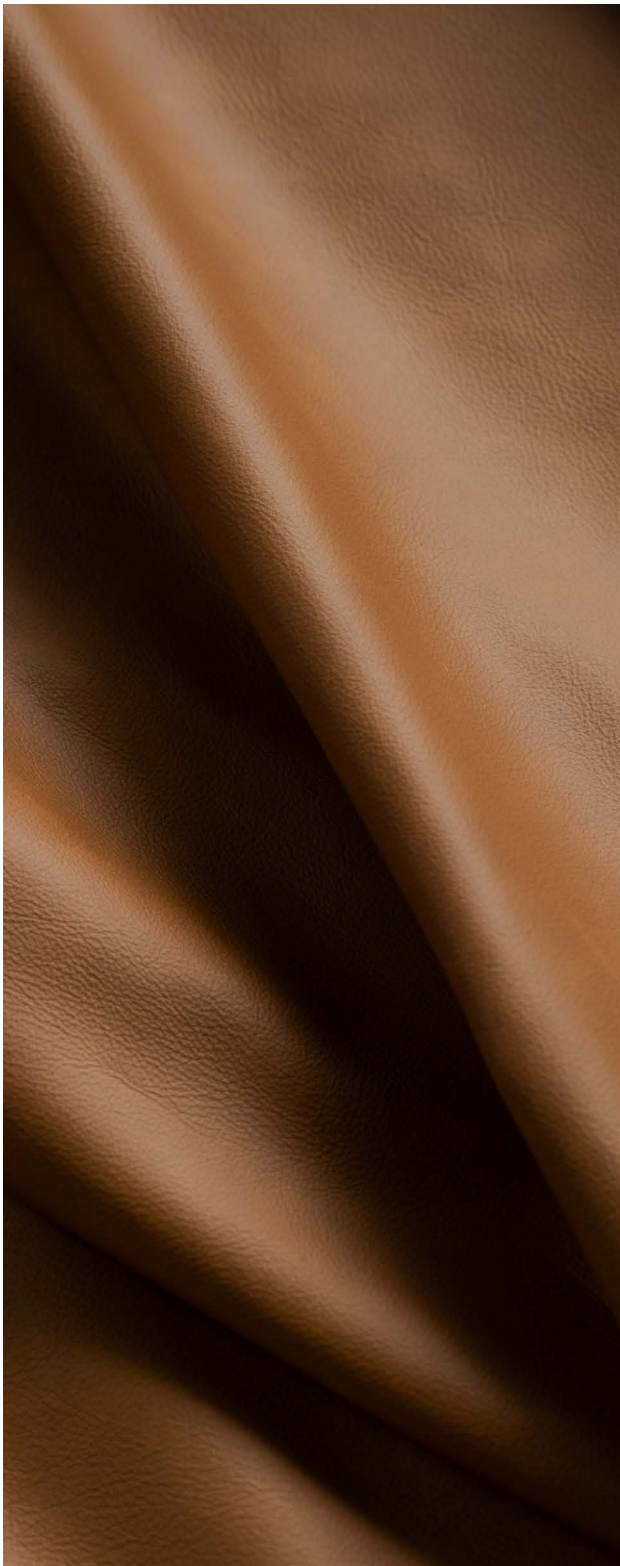
Mohair Camel  
- 1090



Mohair Brick  
- 1093

**COMPOSITION**

55% Cotton,  
14% Viscose,  
31% Mohair



Sora is a semi-aniline leather with a lightly buffed surface, refined to reduce the appearance of pores and natural surface marks. This treatment creates a clean, matte look while maintaining a soft and comfortable hand feel. Enhanced with anti-scratch and water-resistant properties, Sora offers a practical balance between durability and visual restraint, well suited for everyday use.

<b>DYING</b>	Semi aniline
<b>GRAIN</b>	Half grain
<b>HIDE ORIGINAL</b>	Cow
<b>THICKNESS</b>	0.9 - 1.1 mm



Sora Fog Grey  
- PG



Sora Tan  
- TA



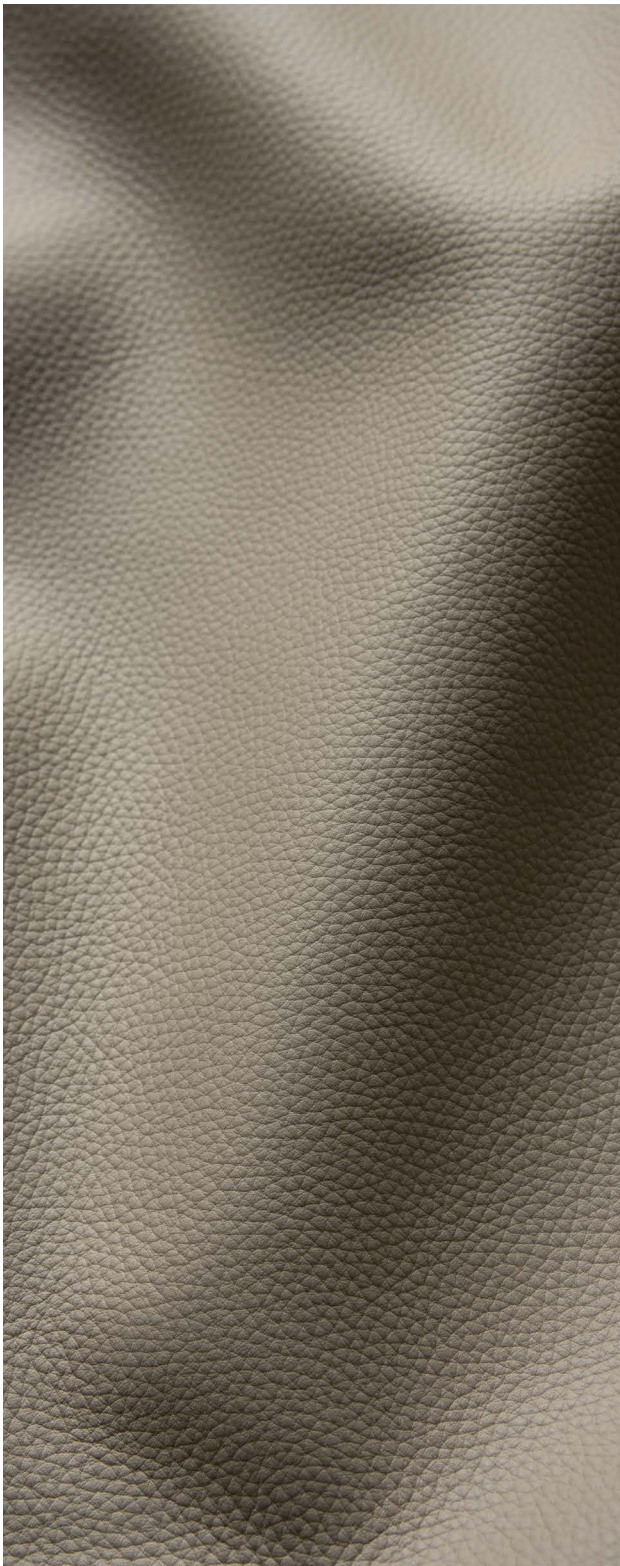
Sora Amarone  
- AR



Sora Moss  
- MG



Sora Onyx  
- OX



Omari is a refined Italian full-grain leather finished as semi-aniline, balancing natural grain visibility with added durability. Smooth to the touch and visually composed, it offers a sophisticated surface that performs well across both residential and hospitality environments.

<b>DYING</b>	Semi aniline
<b>GRAIN</b>	Natural Grain
<b>HIDE ORIGINAL</b>	Cow
<b>THICKNESS</b>	1.3 - 1.5 mm



Omari Putty  
- PU



Omari Sepia  
- SE



Omari Chocolate  
- CH



Omari Burgandy  
- BG



Omari Tek  
- TE



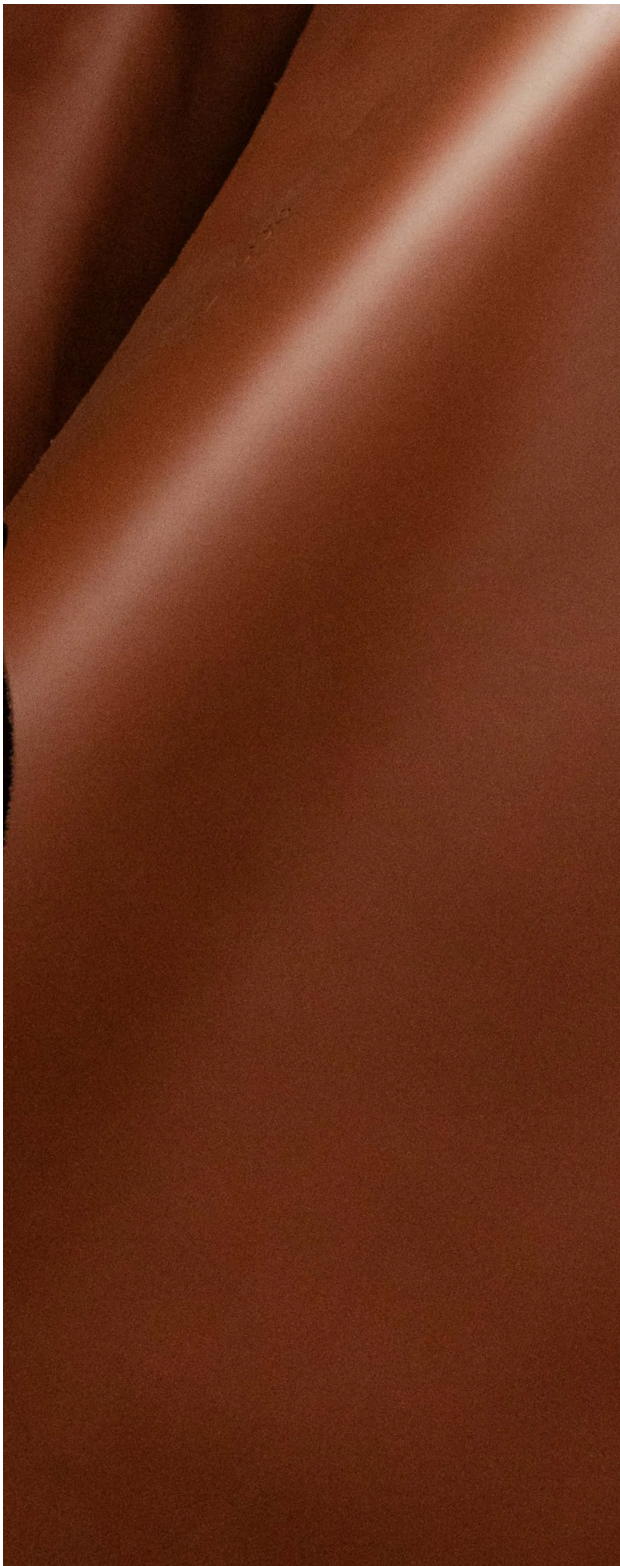
Omari Loden  
- LD



Omari Marine  
- MR



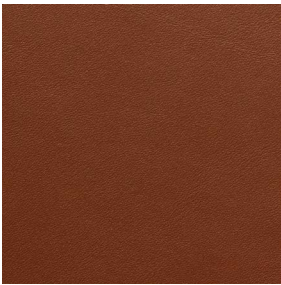
Omari Ink Black  
- IB



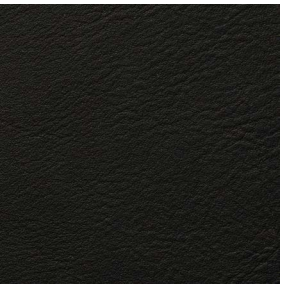
Amos is a premium full-grain leather selected for its smooth, silky hand feel and clean surface appearance. Carefully finished to maintain softness and consistency, Amos brings a sense of quiet luxury and is reserved for selected collections where refined tactility and visual clarity are essential.



Amos Light  
- LI



Amos Cognac  
- CN



Amos Black  
- BL

<b>DYING</b>	Semi aniline
<b>GRAIN</b>	Full grain
<b>HIDE ORIGINAL</b>	Cow
<b>THICKNESS</b>	1.2 - 1.5 mm

HARD-GOOD

/

TIMBER

/

METAL

/

STONE

/

LACQUER



District Eight sources oak from responsibly managed forests in North America. Chosen for its strength and structural stability, oak ensures long-lasting durability across furniture collections. Its natural grain and refined appearance offer both visual clarity and timeless appeal.



Raw Oak  
- MRAO



Beige Oak  
- MBEO



Seared Oak  
- MSEO



Ebonized Oak  
- MEBO

Fir wood is sourced from Canada and valued for its layered grain structure. When combined with District Eight's finishing techniques, the material reveals depth and texture, allowing the story of the wood to be experienced through both sight and touch.



Light Fir  
- MLIF



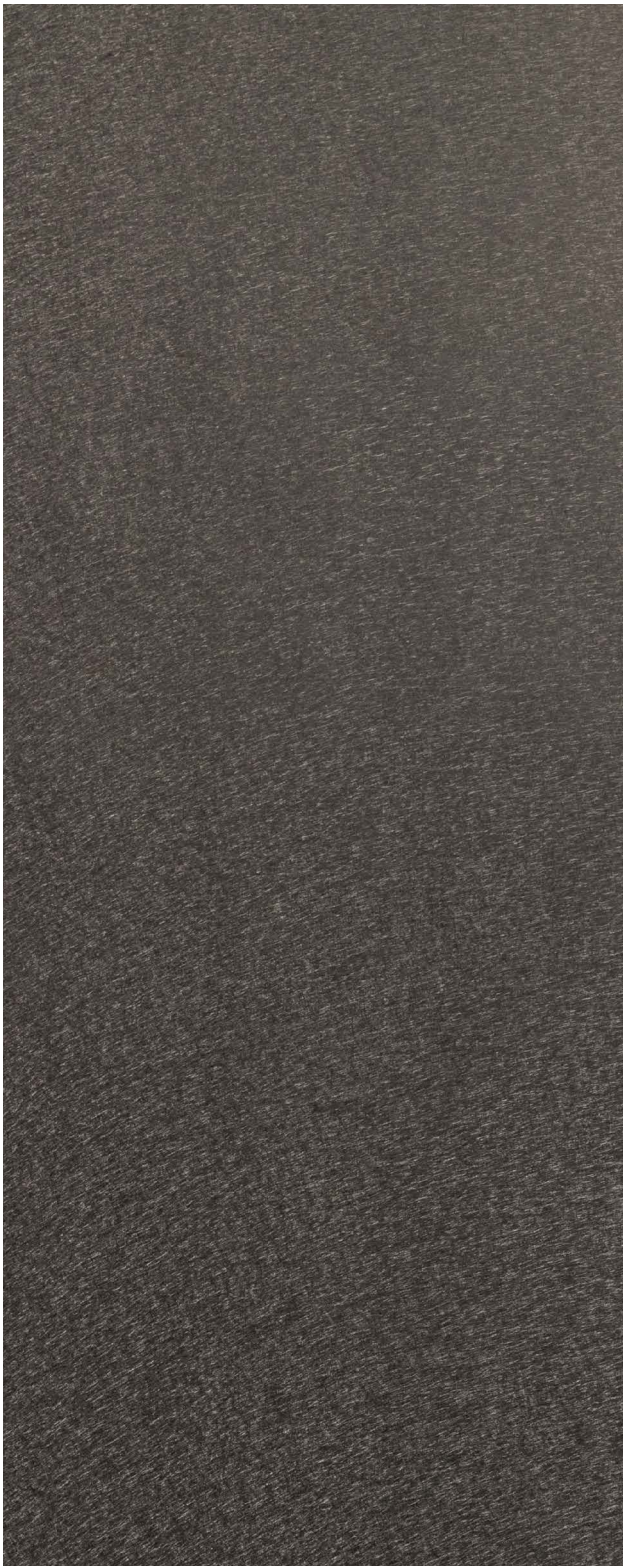
Burned Fir  
- MBUF

**HARDGOOD**

**/ METAL**

**/ ANTIQUE**

District Eight's metal finishes are crafted with hand-worked surface treatments, giving each piece a unique pattern and depth. Finished with low sheen for a contemporary look, and protected with anti-scratch applications, these metals balance visual clarity with durability.



Antique Nickel  
- AN



Antique Brass  
- AB

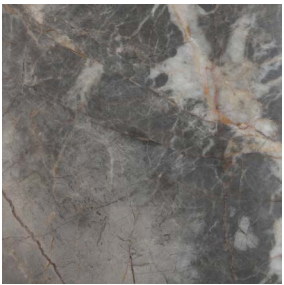


Blackened Steel  
- BS

Stone materials used by District Eight include both imported stones and distinctive local Vietnamese marbles. Surfaces are finished with a contemporary matte treatment and protected for durability, ensuring long-term performance while preserving the natural character of each stone.



Athena Grey Marble  
- ATM



Grey Marble  
- GRM

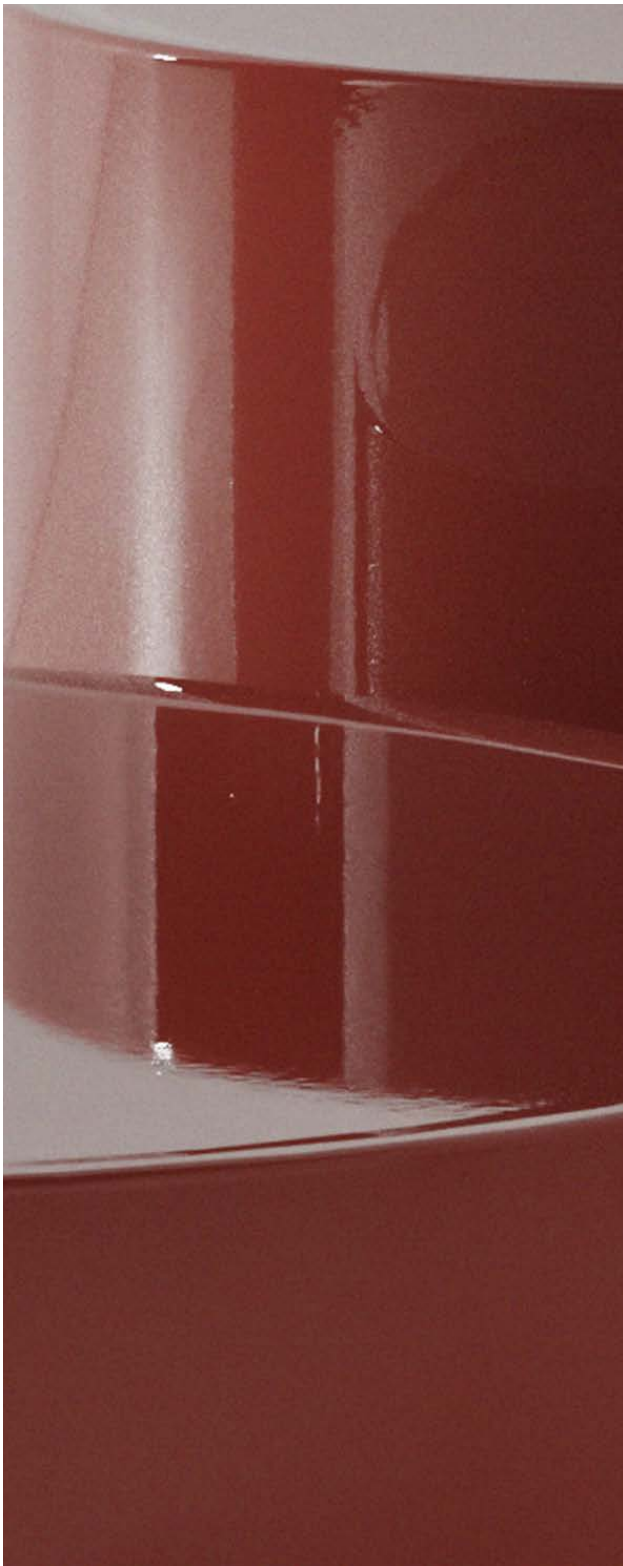


Black Marble  
- BLM

**HARDGOOD**

**/ LACQUER**

District Eight's lacquer finishes are entirely hand-applied, with controlled gloss to avoid excessive shine while still catching light softly. Table surfaces are protected with a PPF layer to resist light scratches and allow for easy cleaning and maintenance.



Oxblood Lacquer  
- OXB



Black Lacquer  
- BLA

# CARE & MAINTENANCE INSTRUCTIONS

<b>/UPHOLSTERY</b>	<b>Maintenance</b>	<b>Freshening</b>	<b>For sofa and armchair:</b>	<b>/LEATHER</b>			
	<ul style="list-style-type: none"> <li>- Protect from direct sunlight.</li> <li>- Vacuum regularly using low suction.</li> </ul>	<ul style="list-style-type: none"> <li>- Professional cleaning is recommended.</li> <li>- Do not wet the inside filling.</li> <li>- Dry in shade, away from direct sunlight.</li> <li>- Allow to dry completely before using again.</li> </ul>	<ul style="list-style-type: none"> <li>- Shake cushions regularly to keep shape and to reduce flattening over time.</li> <li>- Avoid exposing your furniture to direct sunlight or place near to a source of heat such as radiators or heaters.</li> <li>- Do not spill liquids on your sofa. Liquids seep right into the fabric or leather, causing it to discolor.</li> <li>- Recommended that you vacuum your sofa at least once a week. Air and vacuum your sofa regularly. Avoid cleaning your sofa with a brush as this can damage some fabrics.</li> <li>- Always lift your sofas, never drag them as you may break or scratch the legs or damage your floor.</li> <li>- Remember the arms of your sofa are for arms. Avoid sitting on these or placing heavy objects on them as this can weaken or damage the frame.</li> </ul>		<ul style="list-style-type: none"> <li>- The leather parts can be cleaned using suede and nubuck cleaner.</li> <li>- Avoid exposing leather to direct sunlight.</li> <li>- Avoid placing leather furniture close to sources of heat.</li> <li>- Avoid air drying of rooms in which leather furniture is placed.</li> <li>- Avoid spilling liquids/oils and fats on leather furniture.</li> </ul>	<ul style="list-style-type: none"> <li>- Wipe leather furniture with a clean, dry cloth.</li> <li>- Never apply chemicals, sulphonated washing and cleaning detergents or fats (leather polish/oil).</li> <li>- Maintain a regular level of moisture of the atmosphere in rooms in which leather furniture is placed.</li> </ul>	<ul style="list-style-type: none"> <li>- Natural colored leather is a very delicate type of leather and will absorb liquids, e.g. spilled drinks/oils and fats.</li> <li>Only try to remove the stains as a last resort, as the leather is easily damaged by cleaning attempts.</li> </ul>
				<b>/FELT</b>	<ul style="list-style-type: none"> <li>- Use a duster or soft brush to clean the surface of any loose dust and dirt.</li> </ul>	<ul style="list-style-type: none"> <li>- If necessary, use a vacuum cleaner fitted with a soft brush.</li> </ul>	
				<b>/TIMBER</b>	<ul style="list-style-type: none"> <li>- Avoid placing wooden furniture in direct sunlight or close to strong heat sources. Also avoid placing hot or wet items directly on the wood. Any stains should be removed quickly before they cause permanent damage to the surface of the wood.</li> </ul>	<ul style="list-style-type: none"> <li>- Cleaning - For everyday maintenance and cleaning, wipe the wood with a clean, dry cloth. We recommend that you avoid using products containing silicone because it seals the surface with a membrane, which will make any later repairs or re-finishing more difficult</li> </ul>	

# CARE & MAINTENANCE INSTRUCTIONS

## /METAL

-Use a duster or soft brush to clean the surface of any dust or dirt. Clean with a soft and dry cloth.

- Do not use any abrasive products, as these will gradually erode the finish. Do not use abrasive sponges as they may leave scratches.

- Wipe in one direction only, along the original polish lines.

- Never leave liquids or other chemical substances to sit on metal parts. Avoid contact with all acidic substances.

- Products not specifically marked with the words Suitable for Outdoor Use must not be used outside because they would be subject to permanent damage by the elements.

## /CONCRETE / STONE

- Cleaning periodically will extend its service life and enhance its beauty. It can be difficult to tell when concrete is in need of cleaning because the dirt and grime can build up so slowly. However, once the process is done, the results of freshly cleaned concrete are very noticeable.

- Avoid abrasive soaps or cleansers. Use a mild, non-abrasive, non-ammonia-based soap and simply wipe down with a damp cloth.

- The parts can be regularly cleaned with clearwater to improve and maintain the natural look. To clean these parts, use a soft lint free cloth or rag soaked in water with some added liquid wax.

---

*\* For any other queries, please contact your closest vendor.*

